



Green Homes Grants & LADS

Kate Thomas
Senior Project Manager



Green Homes Grants

- HUGS phase 1 was announced in August 2020
- The Green Homes Grant Scheme (Voucher) is comprised of the £1.5bn voucher scheme and £500m of Local Authority Delivery (LAD)
- LADS phase 1b – is happening now
- Scheme has now been extended to end March 2022



What are GHG?

- Vouchers for low carbon heating and insulation improvements for able to pay households and low income households
- Main scheme: Up to £5k (or 2/3rds) of the cost of primary and secondary measures for homeowners and landlords
- The low-income element: 100% funding up to £10k for low-income owner occupiers
- Park homes included



Who can get one

- All owner-occupied homes (including long-leaseholders, shared ownership)
- Landlords of private rented sector domestic properties
- Landlords of social sector domestic properties (including LA owned homes)
- Park home owners (for residential sites including Gypsy and Traveller sites)



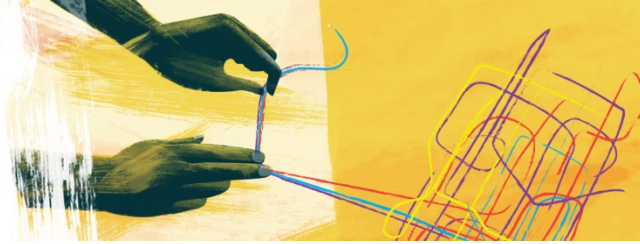
Low income scheme

- Households receiving income-based or disability benefits are eligible for a fully funded package of measures
- Up to £10k
- For example, Income support, DLA, PIP



How to apply

- Use the SEA website
- www.simpleenergyadvice.org.uk/pages/green-homes-grant.
- Produces a basic report as a PDF which you can download
- Gives you a list of Trustmark approved installers to contact
- Lists people to contact for more advice



Measures covered

Primary

- Insulation: Solid wall, cavity wall, under-floor, loft, flat roof, room in roof, park home.
- Low carbon heat: Air source heat pump, ground source heat pump, solar thermal.

Secondary:

- Draught proofing, windows and doors
- Heating controls and insulation e.g. appliance thermostats, HWT thermostats, HWT insulation, smart heating controls, TRVs



Measures detail

- Secondary measures can only be subsidised up to the amount of subsidy provided for primary measures e.g. if a household receives £1K for primary measures, they can only receive a maximum of £1K towards secondary measures.
- For low-carbon heating to be installed, households will need to have adequate insulation. These can be installed as part of the package.



Who can do the work

- You can't just use your local builder
- Installers need to register with Trustmark
- For energy efficiency measures they can do this if they are PAS 2030:(2019) complaint
- For heat measures they need to be MCS (Microgeneration Certification Scheme) certified



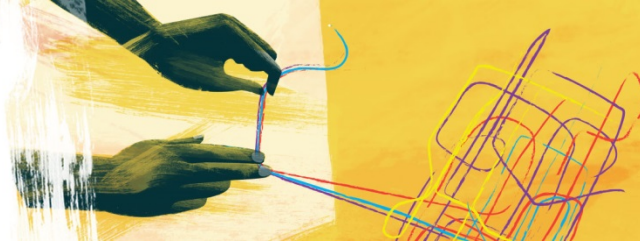
What are LADS?

- We have LADS funding in Somerset
- The Local Authority Delivery Scheme is available for all tenures and will be administered by the council directly
- Household income must be £30K or less (net?, before housing costs) and EPC must be D,E, F or G.
- Max grant is £10K and measures must be fully funded



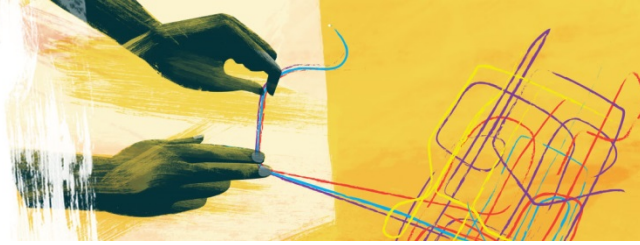
What are LADS?

- We have LADS funding in Somerset
- The Local Authority Delivery Scheme is available for all tenures and will be administered by the council directly
- Household income must be £30K or less (net?, before housing costs) and EPC must be E, F or G.
- Max grant is £10K and measures must be fully funded



What funding can be used

- GHG and LADS funding can't be combined
- If you use one you are ineligible for the other
- ECO can't be subsidised by GHG or LADS. But it can be used to pay for a completely different measure
- The GHG will be taken off any RHI grant
- RHI payments will be adjusted accordingly
- Council grants and WHF can be used with GHG or LADS



Issues with GHG

- Limited number of installers with huge consumer demand
- To become Trustmark approved you need MCS or PAS 2030:(2019)
- Skilled local builders who are capable of SWI in particular aren't likely to do PAS 2030
- Small businesses with a few employees can't carry the overhead of PAS 2030



Issues with application

Low income households

- Process isn't digitally inclusive
- Online form is quite long with a number of information requirements
- Installers would like us to help with casework to complete the forms



Thankyou

Kate Thomas

Kate.Thomas@cse.org.uk