

# Creating a fairer energy market for disabled people

Anna Bird, Director of Policy and Research

19 September 2018

**SCOPE**

**=** Equality for  
disabled people

# Extra costs of disability

## Life costs more if you're disabled

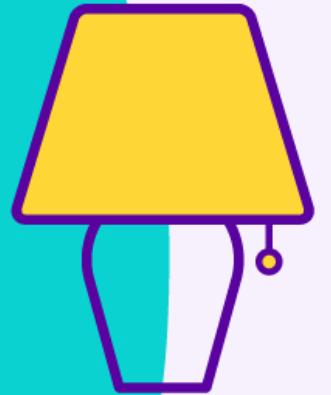
- Disabled people face average extra costs of £570 per month related to their impairment or condition.
- For one in 10, extra costs amount to over £1,000 per month.
- This is on top of welfare payments to help meet these costs.

# Energy costs for disabled people

“I need the heating on pretty much constantly. I also use an electric heat pad to help manage my pain and an electric wheelchair to go outside. This equipment requires charging frequently.” **Lynley**

“Because of my arthritis I have to keep warm. I need to have the heating on to keep the house warm.” **Lynda**

A third of disabled adults say that their impairment or condition has a **significant impact** on their energy costs



**SCOPE =** Equality for disabled people

# Making change happen

## How can we improve the energy market for disabled people?

- Support disabled people to get a good deal
- Improve support for disabled people in the energy market
- Make better use of data

**SCOPE =** Equality for disabled people

# Thank you

Get in touch at [policy@scope.org.uk](mailto:policy@scope.org.uk)

**SCOPE**

**=** Equality for  
disabled people